

Moodboard [1] of proposed plan [2] to a living and dining in Orange County CA – January 2015



Living area before with out of date colour: mustard yellow wall



Proposed living after with left featured striped wall with soothing colour of light greyish tone and off-white colour. This application will make the room deeper visually. Other walls in living and dining will look fresher with an off-white colour. This will contribute to open the space



Option a - Hjalmlaren ladder black x 2



Option b - grey sheer curtain - ceiling to floor length

This home has too many clashed decor items, design theme, form and colour scheme. For a modern look, the area is required to declutter living and dining area for a fresh start.

What's to keep

Glass wall of either side of the fireplace to stay with Option 1 and Option 2

Minor remodelling

Remove vertical glass panelling above the fireplace make sure the substrate is in a good condition for either a paint job or wallpaper application. Fireplace - Wall paper treatment to the façade of the fireplace - a stone look or a paint job with off-white or light grey tone as the colour of the horizontal stripe of the left wall.

Piano - Keep this as heirloom  
TV set - for family entertainment

**New colour scheme**

Black, copper, dark blue, grey, charcoal, dark greyish brown, light grey tone, off white  
Accent colour: lemon yellow, imperial bronze, turquoise, copper

**Group A  
Floor items to  
living area**



Charcoal Knopparp loveseat



Vittsjo nesting table



Striped rug



Tiffany accent buttoned armless chair



Black Trendig chair

## 2 - Living area after:

Proposed a modern, eccentric look to the living with a warm friendly ambience.

**Option 1** - Introduce two ladders to either side of the fireplace. Stack these makeshift shelves with decorative items such as old books. In addition, cluster of white or turquoise, or lemon yellow porcelain ware and glass ware.

**Option 2** - Install two sheer metallic light grey curtains at ceiling to floor length to accentuate the height of the room. The focal point is a black Ungdrill mirror above the fireplace at above eye level. Two new charcoal Knopparp loveseats are placed against the left featured wall with off white and light grey. Above these seats, position a cluster of copper rounded metal trays.

For lighting source, two bronze Livex candle lights are used to emphasize the eccentric flair, with the existed recessed down lights scattered on the ceiling, check these lamps Wattage per unit for energy efficient aim.

Vittsio nesting glass table anchors the space, but not crowded the small space at the same time. Underneath, place a striped rug it to create the depth and lengthen the floor surface visually.

A Tiffany buttoned armless chair couples with a black Trendig chair will add a classic note. An existed piano anchors against the right wall. It is a family heirloom, and it needs to be revived. A TV set can be found right above the piano for weekend family movie night. To highlight the importance of a family value, portrait of family's offsprings is the wall art. It merges the two separate functional rooms of living and dining and certainly adds a warm spice to the interior.

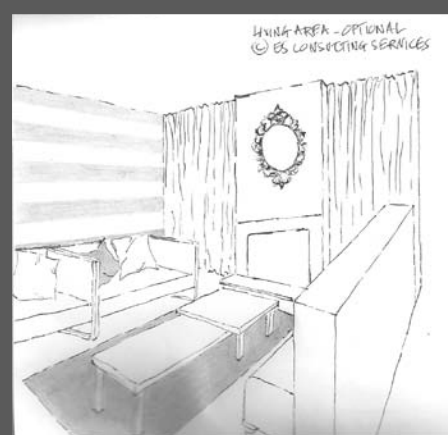


Living after with option 1

A modern, eccentric space oozes with a warm country classic with ladders used as makeshift shelving to display decorative items, such as old books, ceramic ware glass ware of complimentary shapes and shapes and colour scheme



Luxurious finish with metallic sheer curtain on either side of fireplace

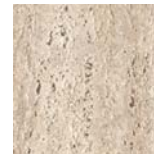


Living after with option 2

A modern, eccentric space oozes with a warm and luxurious flair. Introduce two sheer curtains over glass wall on either side of the fireplace



Livex candle twin wall lights



Wallpaper Stone finish

### Group B Wall Items to living area



Black Ung-drill mirror



Livex candle wall light

Cushion – keep in different sizes and around the colour of turquoise, lemon yellow, metallic silver



Cluster of 3 copper decorative trays

### 3 - Dining area after:

Proposed clean line for a modern and cozy dining area with a mixed of American colonial spice and Mexican flavour. Window sill and frame to be in a light greyish colour with off white venetian blind  
 Introduce a round dining table can be in black, or charcoal, or yellow lemon or Turquoise. A light yellow and stylish Quorum Ludlow pendant reflects the squared form of the family portraits and the hand painted Mexican tiles – off white walls will open the space up as in the living area.  
 For an urban and casual family affair, black /Trending chairs and black/copper folding chairs are used as seating for dining purpose.  
 Mexican blue decorative tiles are used as wall art around the dining table. It is a traditional flair for an inclusion of a celebration of a diverse culture of this family.



Stockist – Living area  
 IKEA  
 WAYFAIR  
 SEARS  
 WALMART  
 Design your wall  
Stockist – Dining area  
 IKEA  
 WALMART  
 Mexicantile.com  
 Lampusa.com

### Group D - Wall & Ceiling Items to dining area



Nine mixed design Mexican hand painted tiles



Folding chair  
 Black & Copper



Round dining table with colour option: Black or charcoal or turquoise for a splash of fun

### Group C - Floor Items to dining area



Black Trendig chair



Quorum Ludlow 2 Light Pendant 30cmW

Venetian blind - Off-white colour